

# HLV YUDIN

---





# HLV YUDIN

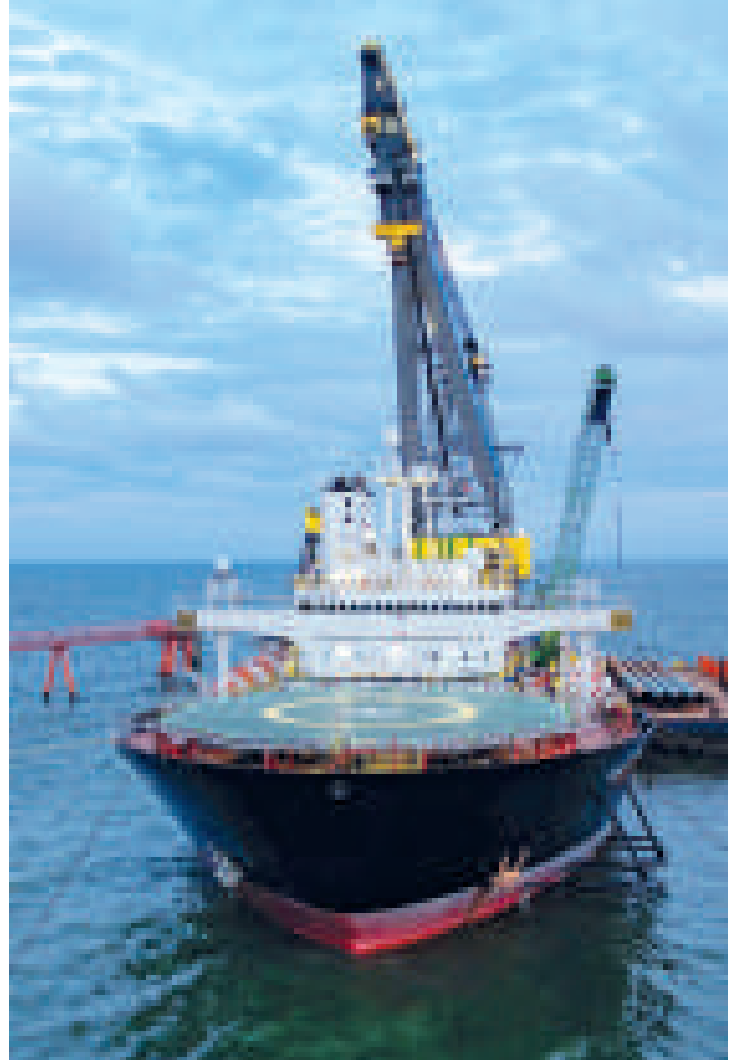
Yudin is a versatile crane vessel ready to serve the offshore energy market.

A fully revolving crane, with capacity ranging from 660t to 2,500t, makes for a perfect vessel to undertake the installation of large and heavy offshore structures in the offshore energy market. A recently added feature is the newly added 1,200t main hoist giving the feasibility to perform installation of jacket structures up to a height of 70m.

The vessel can accomplish a transit speed of up to 10 knots, making it possible to provide a cost-effective transport solution by taking on board offshore structures as an alternative to the feeder transportation concept. With a working draft of max. 8.9m

and transport draft of only 5.5m Yudin provides a solution to install offshore structures in shallow locations, while keeping position using the eight point mooring system.

Overall the Yudin is versatile in many ways making this vessel the perfect solution for your offshore installation works, all over the world.





## GENERAL INFORMATION

Type	Heavy Lift
Classification	DNV 1A1 Crane vessel DK(+) E0 + LTE in 2014
Built	Wartsila, Finland, 1985
Flag	Cyprus

## PRINCIPAL DIMENSIONS

Length overall	183.3m
Length between perpendiculars	173.2m
Breadth	36.0m
Depth from deck	13.0m
Draft	5.5 – 8.9m
Gross tonnage	24,822t
Deck load	<5,000t
Deck space	2,560m <sup>2</sup>
Free deck height	20m (to boom in rest)

## POWER AND PROPULSION

Main engines	3x 4,095kW
Generators	3x 4,860kVA; 600V; 50Hz
Main thrusters	2x 2,800kW, fixed pitch, 360°
Bow thrusters	2x 1,335kW, tunnelled
Emergency power	529kW; 380V; 50Hz
Maximum transit speed	10 knots

## CRANES

Make	Gusto
Main hoist Maximum revolving capacity	2,500t
Maximum lift height above water level	78.04m
Auxiliary hoist Maximum capacity	660t
Maximum lift height above water level	97.82m

## BALLAST SYSTEM

Ballasting tanks	24,100m <sup>3</sup>
Anti-heeling tanks	11,800m <sup>3</sup>
Ballast pumps	6x 850m <sup>3</sup> /h
Anti-heeling pumps	2x 12,800m <sup>3</sup> /h

## MOORING SYSTEM

Eight-point anchor mooring system	10t Delta Flipper
Maximum pull winches	1,800kN
Maximum braking capacity	2,590kN

## HELIDECK

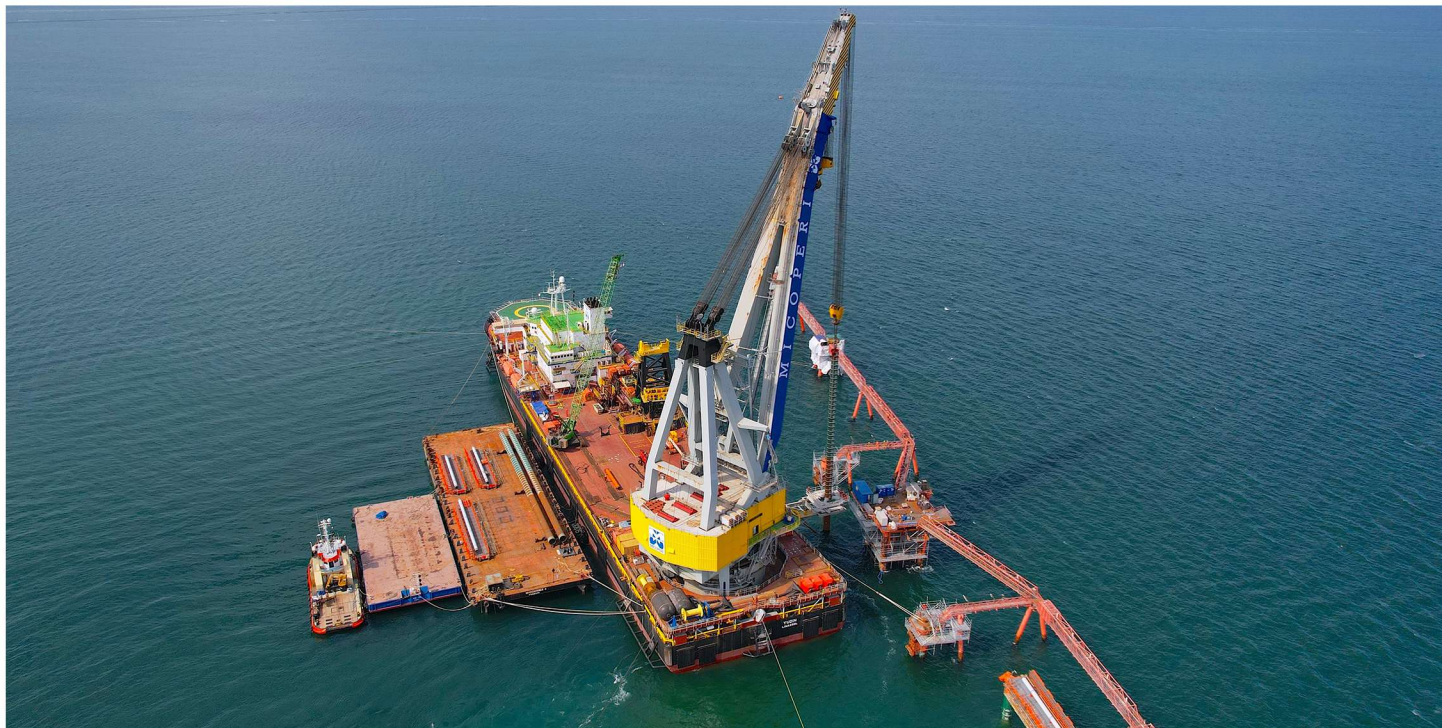
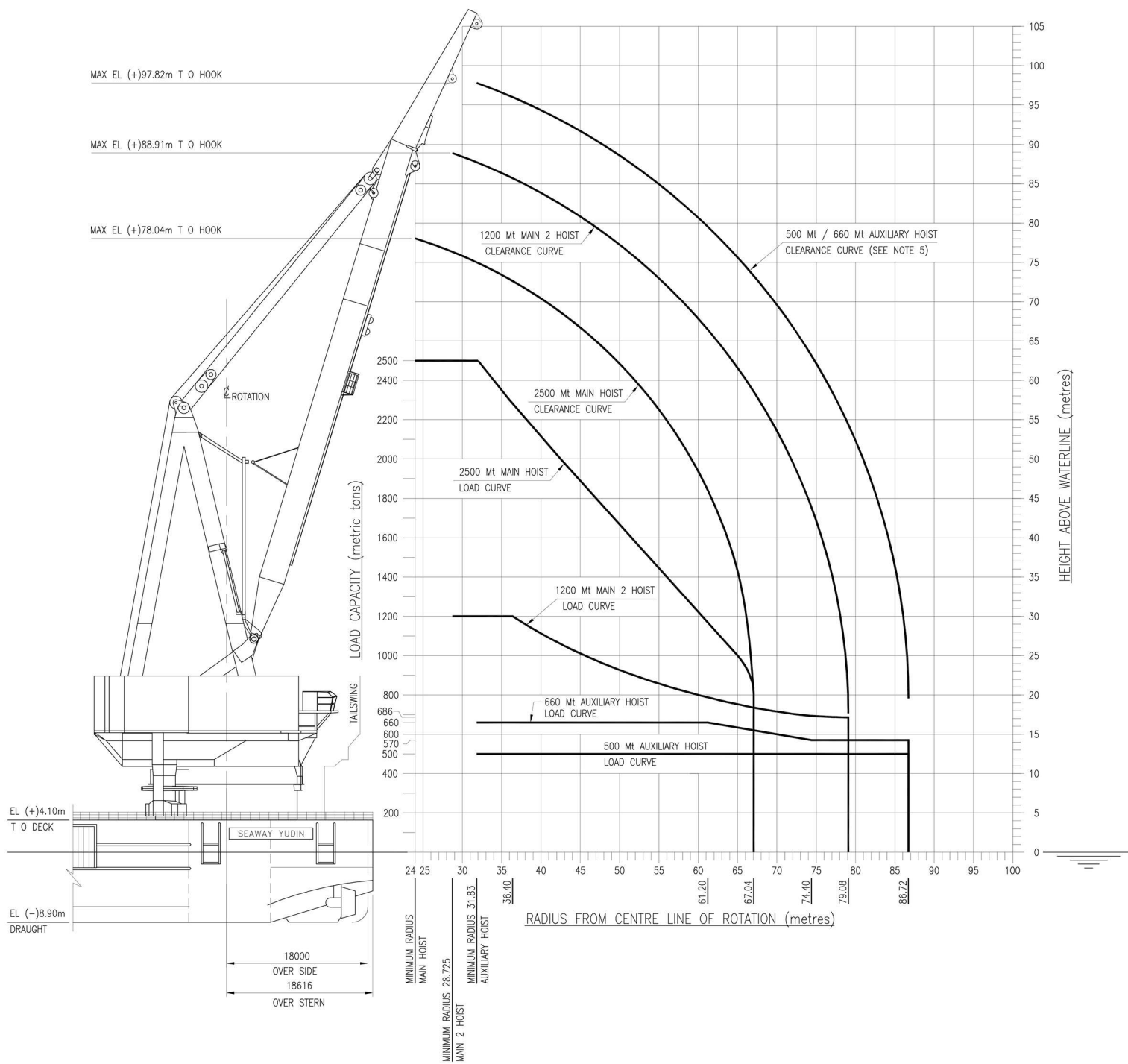
Equipped for	S-61
--------------	------

## ACCOMODATION

People	151
--------	-----









#### **HEAD OFFICE**



Via Trieste 279  
48122 Ravenna IT  
tel +39 0544422252  
[info@micoperi.com](mailto:info@micoperi.com)  
[micoperi.com](http://micoperi.com)